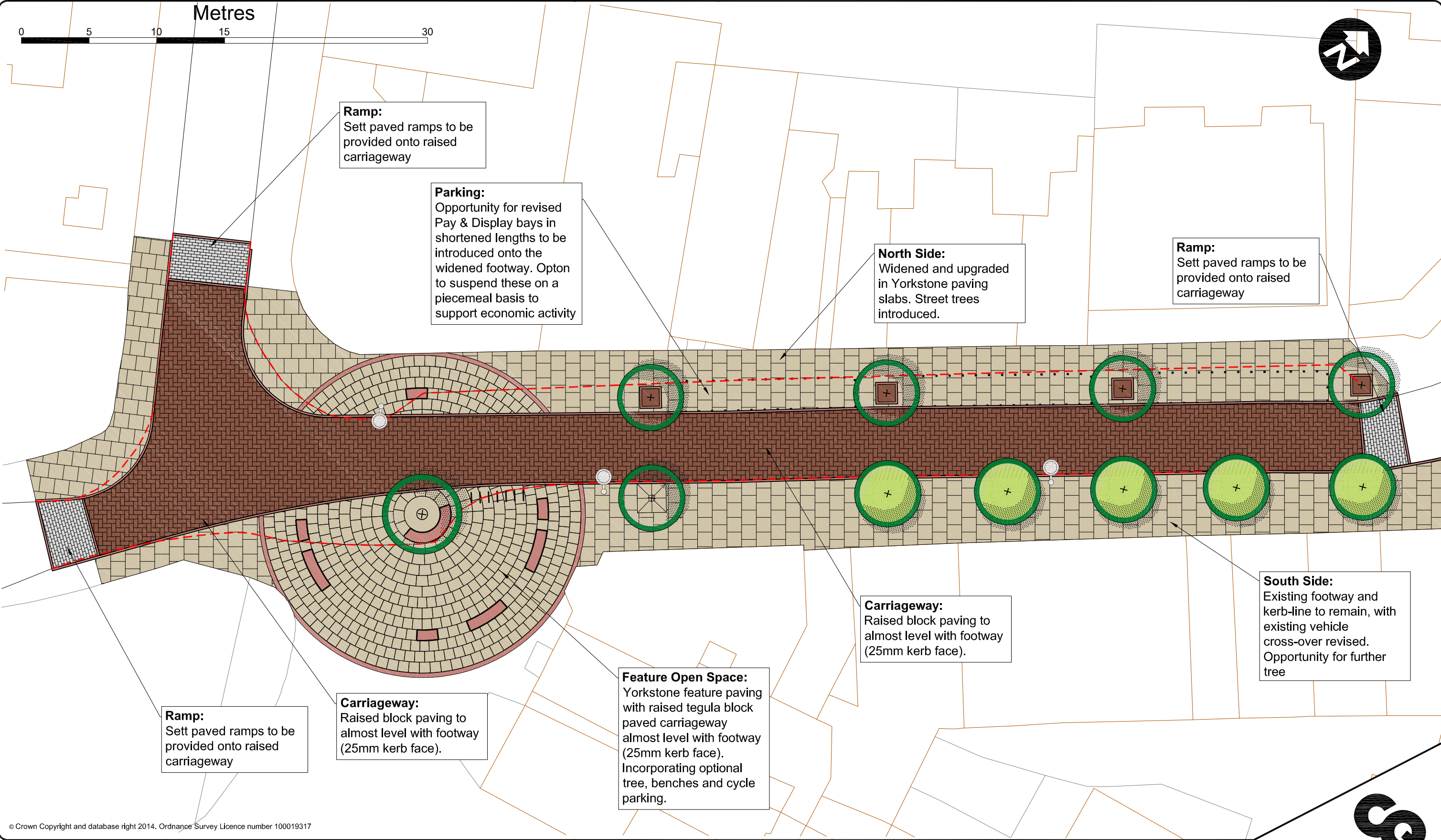


# ERDF/Creative Quarter: Castle Approach - Friar Lane



**Key:**

- |                                     |                                 |   |   |
|-------------------------------------|---------------------------------|---|---|
| New pink granite kerb               | Tumbled concrete setts          | New tree in tree grill (indicative, optional)   | Bench (indicative, optional)            |
| Yorkstone paving slabs for footway  | Existing street lighting column | New tree in raised kerbs (indicative, optional) | Existing kerbline                       |
| Rustic block paving for carriageway | Existing tree to be retained    | Bike stands (indicative, optional)              | Indicative route kept free for vehicles |



**Nottingham**  
**City Council**